

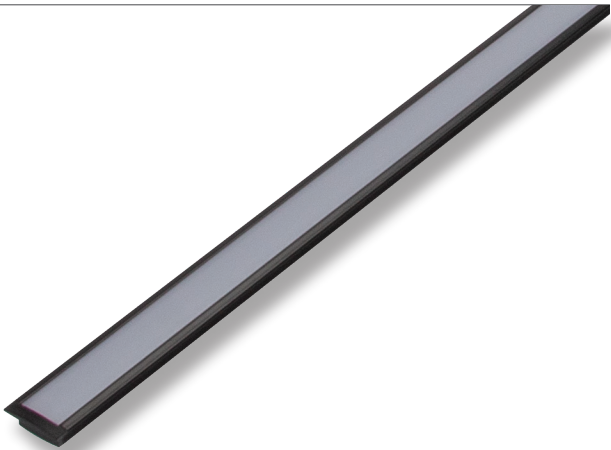
NOVA-17-REC

LED Mounting Profile



Description

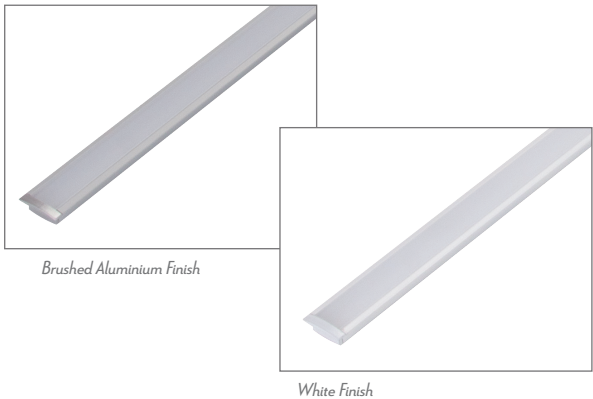
Introducing the NOVA-17-REC mounting profile system. The NOVA-17-REC is specifically designed for the Domus range of LED strip lighting. This aluminium mounting profile system incorporated extruded profile complete with a flat opal PMMA diffuser. The key features of the NOVA-17-REC is the ability to not only conceal the LED strip lighting but also keep the strip lighting linear. Also, the NOVA-17-REC keeps LEDs free from foreign objects and vapours which may damage the LEDs. A simple and shallow yet very contemporary LED recessed mounted profile ideally suited to under bench mounting, wardrobes or laundry applications where minimal mounting requirement are needed.



Specification Features

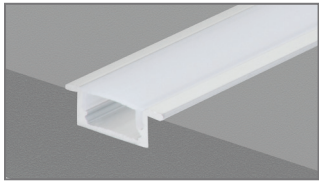
Installation:	Recessed mounted
Material:	Extruded aluminium 6063
Finish:	Natural clear anodised
Diffuser:	Flat (PMMA) high output opal/frost
Length (mm):	2500mm continuous*
Size (mm):	Profile (W) 23mm (H) 8mm
Accessories (each):	End caps (silver)**
Special:	Custom powder coated colour upon request***
Driver Installation:	Remote driver required (not included)

* Profile sold per meter. Can be cut to suit any length.
** Accessories to be ordered separately.
*** Special powder coat finishes upon request. Surcharges apply.

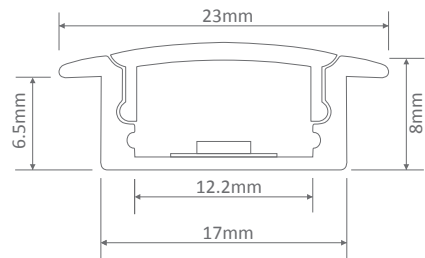


Compatible LED Strip Lighting

7.2	14.4	19.2
.	.	.



Diagrams / Additional



Item No.	Variant			Details
	Alu	Blk	Wht	
NOVA-17-REC	22048	22092	22093	Sold per 1 metre
	22107	22108	22109	Length 2.5m